

Office Address: 660-R George Washington Way, Richland WA 99352

Office hours are Mondays and Thursdays from noon to 2pm

Phone: 1-509-943-2277      Email: ramrovers@gmail.com

Website: ramblingroverstravel.net

Monthly general membership meetings are on the third Wednesday of the month  
at 10 am at Atomic Bowl, 624 Wellsian Way, Richland

## **MAY 2025 NEWSLETTER**

(Any comments about the newsletter, you can email the editor at shepatfleming@gmail.com)

### ELECTED OFFICERS

President: Cyndi Kittson

Vice-President: Marsha Hathcox

Secretary: Lynne Brown

Treasurer: Claudia Theroff

#### Directors:

Diane Beckmann

Pat Landen

Dortha Backer

### APPOINTED POSITIONS

Trip Coordinator:

Trip Coordinator: Linda McCarty, 948-0545

Social Coordinator: Vel Wright, 521-7710

Member Connections Coordinator: Claire Schneck

Office Manager: Margaret Ault, 308-6892

#### OTHER

Attendance: Sharon Warren

Greeter: Barbara Strait

Board Development Specialist: Dortha Backer, 539-4920

Membership Specialist: Karen Crawford

Website Specialist: Larry Smith, 539-1142

Newsletter Editor: Pat Fleming, 539-5459

## MAY BIRTHDAYS—*Happy Birthday*

Connie-Wilson-2	Rex-Stratton-18
Becky -Smith-4	Celina-Walker-19
Annette-Gordon-6	Schroeder-21
Carolyn-Montague-7	Shawna-Heaton-23
Peggy-Brown-10	Vickie-Oord-24
Terri-Lutter-10	Mary-Roberts-24
Pamela-Ono-10	Gloria-Ewing-26
Tony-Budde-12	Jan-Foster-27
Gloria-Engelke-12	Donna-Weisenberger-29
Joe-Terpenning-13	Jerry-DeLisle-31
Sharlyn-Biangasso-14	
Jan-Altergott-15	
Lynne-Brown-15	
Mary Jane-Stephens-15	
Vicki-Swenson-16	
Pat-DeBattista-18	

“Our very nice Rovers contributed 82 lbs to the Food Bank and 47 lbs to Martha’s Cup-board in April. That’s a total for the year of 667 lbs. Thank you Rovers!!” - Verna



You’ve heard the song “*I’m forever blowing bubbles*,” right? Well, here we are asking **again** for Rover Office volunteers. We need a volunteer for the 2nd Thursday and one for the 4th Thursday of every the month from 12 to 2pm. Contact Rover Office Manager Margaret Ault at (509)308-6892 or [mpa99336@gmail.com](mailto:mpa99336@gmail.com)

**THANK YOU CAROLYN GRACE AND CHERI JONES FOR VOLUNTEERING  
AT THE ROVER OFFICE FOR THE 3RD THURSDAYS OF THE MONT**

## WELCOME NEW MEMBERS

Elizabeth McFadden	Terri Lutter
Joyce McCalahan	Sherri Muffett
Ann Bell	Mary Zilar
Gordon & Linnea Benningfield	Deborah & Steve Ylinen
Dixie Blankenship	Nancy & Rex Stratton
Diane Bonin	Kathy & Don Lewis
Randy & Sherry Gosseen	Denise Ford

There are no goodbyes for us. Wherever you are, you will always be in our hearts.

*PAT FUHRMAN, dod 4/8/25*

It will not be the same without “PacPat” leading half of our trips. We are all so saddened by her death.

If anyone is interested in being Trip Coordinator. It is an appointed position by the president. The following is what PacPat told me she did in general while I was acting as her assistant. Our other trip coordinator commented that “day trips” are easier to plan than seen below.



TRIP COORDINATOR - gets a free trip

Must attend Board meetings when getting trips approved.

Must attend General Meetings to respond to members wanting to sign up for trips.

Duties

Choose an event, get the price plus fees and taxes. Get the cancellation policy. Date, time. How long is the event.

Contact the motel get price per night plus fees and taxes. Is breakfast included.

Price for a 2 queen room (2 people); price for single. Remember to comp the bus driver.

Check restaurants and make reservations.

Tickets for events? Price per person plus fees and taxes.

Plan events on the way to and from. (Event, prices, fees plus taxes). Reserve tickets

Figure mileage and time at each place - remember bathroom breaks.

Make full sheet flyer to display at meeting, for the trip book and to send to the newsletter editor. Make half sheet flyers to hand out at meetings and for the office.

Figure all costs: bus (give bus company where and how long at each place), driver tip (\$3/person/day), motels per person per room, tickets, meals if included, snacks, water, prizes.

Make itinerary for assistant to include in the snack bag.

Keeps sign up sheets. Decides if they or the assistant alphabetizes and sorts them by pick-up city.

ASSISTANT TRIP COORDINATOR to be chosen by Coordinator - assistant also gets a free trip. Adds the coordinator and assistant's name and phone # to itinerary and prints copies for each snack bag. Snacks plus water for each person. From the RR medical info spreadsheets, copy only the members traveling and take that list on the trip (or print the whole thing which is quite a few pages). Shred old medical prints when done. Fill snack bags and hand out water for each day. Be in charge of the stool that helps members get into the bus. Work with coordinator on games and prizes. May keep spreadsheets of sign up lists if coordinator chooses.

ADDED - If Coordinator and Assistant trade off checking members into and off of the bus in Kennewick & Richland, the last one of them on the bus is responsible for checking the bus for trash.



LAST MEETING TO SIGN UP FOR THE ROVER ANNUAL PICNIC  
AT A GENERAL MEETING IS MAY 21ST. WE PROMISE NO  
ANTS, BEES OR WASPS. JUST WONDERFUL POTLUCK ITEMS  
BROUGHT BY OUR MEMBERS. IT IS ALWAYS A FEAST.

## ROVER SUMMER PICNIC

Wednesday, June 25, 2025

**POTLUCK MEAL @ 11:30—2:00 p.m.**

Drive yourself to the **Highland Grange Building**

**15 S. UNION ST., KENNEWICK**

Parking is great—lock your car and don't leave valuables inside

Bring a Potluck Dish to Share based on the first initial of your last name.

A– G DESSERTS

H-R SALADS

S-Z MAIN DISHES

Plates and table-service will be provided along with  
bottled water and meat.

**PRICE: \$10**

*Checks only please when mailing. **Make payable to Rambling Rovers***

MAIL CHECKS ONLY TO:

VEL WRIGHT

4410 W. METALINE

KENNEWICK WA 99336

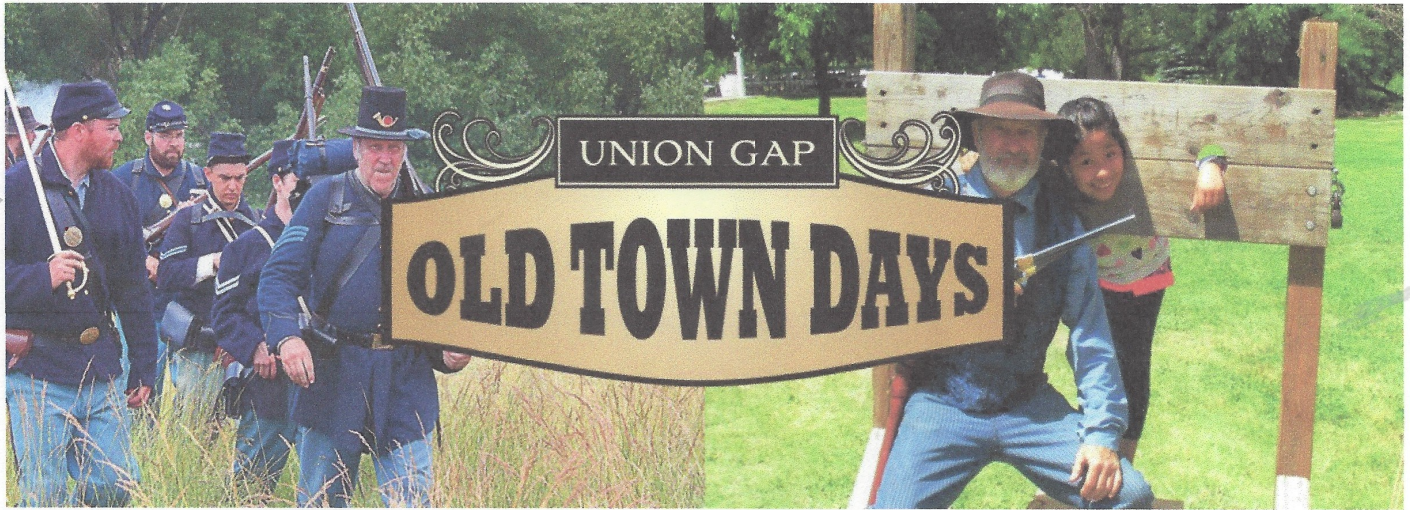
OR

BRING YOUR CHECK OR CASH IN THE  
EXACT AMOUNT TO A ROVER'S  
GENERAL MEETING ON 4/16 OR 5/21

(do not mail or take to the Rover office)



**Central Washington Agricultural Museum @ Union Gap, WA.**



## **UNION GAP OLD TOWN DAYS & CIVIL WAR REENACTMENT Saturday, June 14<sup>th</sup>**

Wander through acres of history camps with demonstrations and information about life during the Civil War - both at home and on the battlefield, brought to you by the talents of the **Washington Civil War Association**. Walk through the Union and Confederate camps, visit with the Civil War Reenactors and learn about our American History. Come watch the North and South face off each day during the battle reenactments.

**PRICE \$70.00**

---

**Checks will need to be mailed to the office @ Rambling Rovers, 660-R George Washington Way, Richland, 99352 as Linda will be absent from the MAY General Meeting.**

---

**Deadline is June 2, 2025**

**Kennewick=8:00 a.m.**

**Richland=8:30 a.m.**

Led by: Linda McCarty and Jim McCarty

509-948-0545      509-948-4171



# Great Smoky Mountains, Nashville & Kentucky

September 6 – 14, 2025

9 Days & 8 Nights

## Sightseeing Highlights

Great Smoky Mountains National Park  
Over Mountain Aerial Tram  
Dollywood  
Louisville's Slugger  
Churchill Downs  
International Museum of the Horse  
Ark Encounter  
County Music Hall of Fame & Studio B  
Bourbon Distillery Tour  
Nashville  
Grand Ole Opry

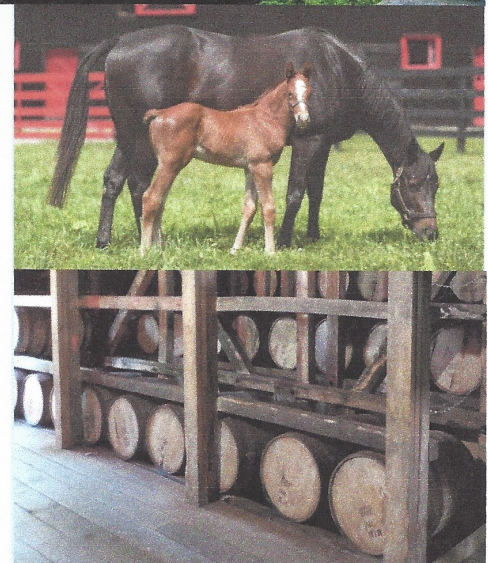
## Itinerary

**Day 1** (Sept 6)) Fly into in **Louisville, Kentucky**. Upon landing, you'll be greeted by your Friendly Excursions tour director and transported to your hotel in the vibrant **Nulu Arts District**, known for its lively nightlife and local charm. Enjoy your evening exploring the area. 1 night stay in Louisville, KY.

**Day 2** (Sept 7) Start out tour at **Churchill Downs**, home of the **Kentucky Derby Museum**. Next stop is the **Louisville Slugger Museum & Factory** where the famous bats were made. Lexington, KY 3 Nights. B

**Day 3** (Sept 8) Experience the **Ark Encounter**, a life size version of Noah's Ark. This structure is 1.5 football fields in length (510 feet long, 85 feet wide and 57 feet high) and built with all wood craftsmanship. Our next visit is to the iconic **Bourbon Distillery**, that showcases the Kentucky tradition of bourbon making. Enjoy a tasting and tour which complete our day. B

**Day 4** (Sept 9) We will spend an amazing day at the **International Museum of the Horse**. This Kentucky Park is 1,200 acres working horse farm that features 50 horse breeds. Attractions are: Horse drawn trolley to tour the park, a Hall of Champions, a Museum of the Horse, and farrier and harness shops. Their local guide will take us to one of the Thoroughbred horse farms and through the rolling countryside and back roads of the Bluegrass area. B



**\$4,599.00 Per Person, Double Occupancy**  
**\$5,999.00 Single Occupancy**

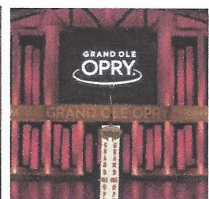
## Tour Price Includes:

Round Trip Airfare  
Deluxe Motorcoach Transportation  
Professional Tour Director  
Admissions  
Hotel Luggage Handling  
Meals: 8 Breakfasts  
2 Dinners



T468





**Day 5** (Sept 10) Begin the day heading to **Gatlinburg, Tennessee**, the gateway to the Great Smoky Mountains National Park. With a variety of restaurant, unique shops with an enjoyable small-town feel. Visit the Sugarland's Visitors Center at the **Great Smoky Mountains National Park** with its interesting and informative museum. Then take in the stunning view of **Newfound Gap**, a part of the Appalachian trail and border with North Carolina. 2 Nights in Gatlinburg, TN. B,D

**Day 6** (Sept 11) Today we explore **Dollywood**, which has been voted one of best theme parks. Here you will find Country music everywhere with live entertainment indoor and out. There's authentic mountain craft demonstration, museums, shopping and delicious food. Take a relaxing ride on the Dollywood Express Train an authentic 110-ton coal-fired steam engine takes you on a breathtaking five-mile journey through the foothills of the Great Smoky Mountains. B

**Day 7** (Sept 12) Today we travel to **Nashville, TN**. the "Country Music Capitol of the World." Afterwards you can spend time exploring our hotel, the **Gaylord Opryland Hotel Resort** which features nine acres of indoor botanical gardens under a climate-controlled glass atrium, complete with rivers, pathways, and waterfalls. This evening we will attend the **Grand Ole Opry**. This is the country's longest running live radio show, and has not missed a broadcast since the beginning of 1925. The shows can offer bluegrass, comedy and gospel artists as well as many well-known country music stars. 2 Nights at Grand Ole Opry Hotel Nashville TN. B

**Day 8** (Sept 13) **Country Hall of Fame and Museum** contains exhibits, films, interactive displays and costumes as well as instruments and lyric sheets. This museum identifies and preserves the evolving history and traditions of country music. Then enjoy a tour of the Historic **RCA Studio B** which is a one of a kind experience where you can walk in the footsteps of famous performers and songwriters alike. B

**Day 9** (Sept 14) Our flight home will be from Nashville Airport. On the flight home you can reminisce wonderful experiences, memories and new friends. B

**Hotel Accommodations:**

- Louisville, KY-1 Night
- Gatlinburg TN- 2 Nights
- Gaylord Opryland Resort
- Lexington, KY -3 Nights
- Nashville, TN- 2 Nights

**GENERAL INFORMATION MANAGEMENT RESPONSIBILITY** - Friendly Excursions, authorized agents, or tour leaders for groups act solely as agents of the tour members in making arrangements for hotels, transportation, or any tour related services and do not assume any liability whatsoever for any injury, damage, death, loss, accident, or delay to person or property due to an act of default of any hotel, carrier, or company or person rendering any of the services included in the tour. Further, no responsibilities are accepted for any damage or delay due to sickness, pilferage, labor disputes, machinery breakdown, quarantine, government, restraints, weather or other causes beyond the control of Friendly Excursions. No responsibility is accepted for any additional expense, omissions, delays, re-routing, or acts of government. Friendly Excursions cannot be held responsible for baggage damage, loss of personal property, possessions, or money. The right is reserved to refuse to retain any member of the group should circumstances so demand, and if such actions is for benefit of the tour. The airlines or transportation companies involved are not responsible for any act, omission, or event during the time the passengers are not on board their planes or conveyances. The passengers contract in use by the carrier concerned, when issued shall constitute the sole contract between the carrier and the passenger. Friendly Excursions, Inc. reserves the right to take photographs, videos or audio/visual recordings during the operation of any program or part thereof and to use them, whether taken by a representative of Friendly Excursions or by other participants, for promotional purposes. By enrolling in a Friendly Excursions program, participants agree to allow their images or recordings to be used for such purposes. Participants who prefer that their images or recordings not be used are asked to identify themselves to program staff and the photographer at the commencement of their program. Tour members are held responsible for being in sufficient good health to undertake the tour. Friendly Excursions is not responsible for any expenses associated with Covid 19.

**INSURANCE PACKAGE** is available for Trip Cancellation, Accident, Life, and Luggage coverage during the tour, and is strongly recommended. NTA Travel Protection Plan Coverage can be directly purchased by visiting our Website, FriendlyExcursions.net . You will be asked for the **Tour Operator Location Number: #058539** and your credit card for payment. If you need additional information please contact Friendly Excursions or your group leader.

**DEPOSIT: \$200 due** now to hold your place. Final payment is due on **July 5, 2025**.

**CANCELLATION:** No refund will be given after **July 5, 2025**.

**Tour ID: T468**



**Friendly Excursions Inc**  
**P.O. Box 69,**  
**Sunland, CA 91041-9998**  
**Phone (818) 353-7726**

WA Seller of Travel Registration 604239199  
 CA Seller of Travel Registration - 2002582-40



**For Information & Reservations Contact**

Linda McCarty  
 Rambling Rovers Vintage Travel  
 634 S Idaho Street  
 Kennewick, WA 99336  
 509-948-0545



TO NEW MEMBERS: On long trips led by a travel agency, your relatives or friends are welcome to come. Check with Linda

# New York City Christmas



**December 8–12, 2025**  
**5 Days 4 Nights**

- Radio City Rockettes Christmas Spectacular
- Broadway Show
- New York Times Square
- New City Tour
  - Rockefeller Center (Top of the Rock)
  - St. Patrick's Cathedral
  - 9/11 Museum and Memorial
- The Metropolitan Museum of Art

## Itinerary

**Day 1** (Monday): Embark on an exhilarating journey with a morning flight to the vibrant heart of **New York City**, renowned as one of the world's most captivating and festive destinations. Revel in the enchanting atmosphere adorned with towering Christmas trees, whimsical ice skating rinks, and bustling Christmas Markets. Delight in an exquisite stay along the illustrious **Restaurant Row**, famed for its culinary delights. Our hotel, just a stone's throw away from the iconic **Times Square**, promises an unforgettable immersion into the pulsating energy of dazzling lights, premier shopping, and Broadway's renowned theaters.



## Friendly Excursions

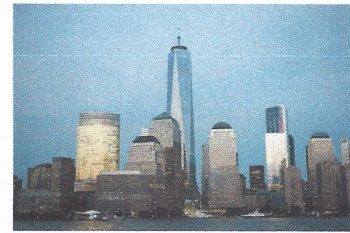
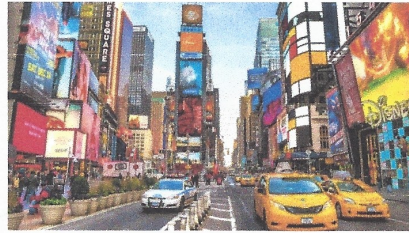
\$3,599.00 per person,  
Double Occupancy  
\$4,599.00 Single

## Includes

- Round Trip Airfare
- Tour Director
- Listed Shows and Attractions
- City Tour
- Round Trip Transportation
- Hotel: 4 Nights at the RIU Plaza Times Square
- Meals:
  - 4 Breakfasts

**Tour ID: T447**





**Day 2** (Tuesday): Kickstart your day with an enriching stroll through the illustrious halls of the **Metropolitan Museum of Art**, a bastion of cultural splendor and the largest museum in the world. Marvel at the majestic Gothic architecture of **Saint Patrick's Cathedral**, the esteemed seat of the Archbishop of New York. Ascend to the awe-inspiring **Top of the Rock** at **Rockefeller Center** for a panoramic 360° vista of the city's skyline from its three observation decks. Cap off your day with the mesmerizing "**Rockettes Christmas Spectacular**" at the iconic **Radio City Music Hall**, where the legendary Rockettes captivate audiences with their unparalleled precision, high-energy choreography, and dazzling costumes. B

**Day 3** (Wednesday): Embark on an enchanting exploration of New York City adorned in its festive Christmas splendor alongside a seasoned **City Tour** guide. Traverse through the city's storied landmarks, immersing yourself in their rich narratives, including a poignant visit to the **9/11 Memorial and Museum**. As evening descends, enjoy a **Broadway theatrical performance**. B

**Day 4** (Thursday): Indulge in a leisurely day to explore New York City at your own pace. Wander through the cities renowned museums, peruse the delights of the Union Square Holiday Market, or partake in another mesmerizing Broadway production or the iconic New York City Ballet's rendition of "The Nutcracker." With boundless opportunities awaiting in the city that never sleeps, the day is yours to craft unforgettable memories. B

**Day 5** (Friday): Bid farewell to the enchanting embrace of New York City as we make our way to the airport for our journey homeward. Reflect upon the cherished memories and experiences accumulated during our holiday escapade, carrying with you the enduring magic of this captivating metropolis. B

**GENERAL INFORMATION MANAGEMENT RESPONSIBILITY** - Friendly Excursions, authorized agents, or tour leaders for groups act solely as agents of the tour members in making arrangements for hotels, transportation, or any tour related services and do not assume any liability whatsoever for any injury, damage, death, loss, accident, or delay to person or property due to an act of default of any hotel, carrier, or company or person rendering any of the services included in the tour. Further, no responsibilities are accepted for any damage or delay due to sickness, pilferage, labor disputes, machinery breakdown, quarantine, government, restraints, weather or other causes beyond the control of Friendly Excursions. No responsibility is accepted for any additional expense, omissions, delays, re-routing, or acts of government. Friendly Excursions cannot be held responsible for baggage damage, loss of personal property, possessions, or money. The right is reserved to refuse to retain any member of the group should circumstances so demand, and if such actions is for benefit of the tour. The airlines or transportation companies involved are not responsible for any act, omission, or event during the time the passengers are not on board their planes or conveyances. The passengers contract in use by the carrier concerned, when issued shall constitute the sole contract between the carrier and the passenger. Friendly Excursions, Inc. reserves the right to take photographs, videos or audio/visual recordings during the operation of any program or part thereof and to use them, whether taken by a representative of Friendly Excursions or by other participants, for promotional purposes. By enrolling in a Friendly Excursions program, participants agree to allow their images or recordings to be used for such purposes. Participants who prefer that their images or recordings not be used are asked to identify themselves to program staff and the photographer at the commencement of their program. Tour members are held responsible for being in sufficient good health to undertake the tour. Friendly Excursions is not responsible for any expenses associated with Covid 19.

**INSURANCE PACKAGE** is available for Trip Cancellation, Accident, Life, and Luggage coverage during the tour, and is strongly recommended. NTA Travel Protection Plan Coverage can be directly purchased by visiting our Website, **FriendlyExcursions.net**. You will be asked for the **Tour Operator Location Number: #058539** and your credit card for payment. If you need additional information please contact Friendly Excursions or your group leader.

**Deposit of \$200.00 per person** due upon sign up to hold your place.

**Final Payment Due on September 9, 2025**

**Cancellation & Refund Policy:** No refunds after September 9, 2025

**Tour ID: T447**



**Friendly Excursions Inc**  
P.O. Box 69,  
Sunland, CA 91041-9998  
Phone (818) 353-7726  
[www.FriendlyExcursions.com](http://www.FriendlyExcursions.com)

WA Seller of Travel Registration 604239199



For Information & Reservations Contact

**Rambling Rovers Vintage Travel**  
634 S Idaho Street  
Kennewick, WA 99336  
Linda McCarty 509-948-0545





# T447 New York City Christmas

December 8—12, 2025

## Sign Up Form

Group **Rambling Rovers Vintage Travel**  
Name: 634 S Idaho Street  
Kennewick, WA 99336  
Linda McCarty 509-948-0545

### Passenger 1:

Name: \_\_\_\_\_ Date of Birth: \_\_\_\_\_ ☐ M ☐ F  
Address: \_\_\_\_\_ City: \_\_\_\_\_  
State: \_\_\_\_\_ Zip Code: \_\_\_\_\_ Email: \_\_\_\_\_  
Home Phone: \_\_\_\_\_ Cellphone: \_\_\_\_\_  
Special Medical Needs: \_\_\_\_\_  
Special Diet: \_\_\_\_\_ Known Traveler # \_\_\_\_\_  
Special Occasion: \_\_\_\_\_  
Emergency Contact: \_\_\_\_\_ Phone: \_\_\_\_\_ Relationship: \_\_\_\_\_

### Passenger 2:

Name: \_\_\_\_\_ Date of Birth: \_\_\_\_\_ ☐ M ☐ F  
Address: \_\_\_\_\_ City: \_\_\_\_\_  
State: \_\_\_\_\_ Zip Code: \_\_\_\_\_ Email: \_\_\_\_\_  
Home Phone: \_\_\_\_\_ Cellphone: \_\_\_\_\_  
Special Medical Needs: \_\_\_\_\_  
Special Diet: \_\_\_\_\_ Known Traveler # \_\_\_\_\_  
Special Occasion: \_\_\_\_\_  
Emergency Contact: \_\_\_\_\_ Phone: \_\_\_\_\_ Relationship: \_\_\_\_\_

### Price & Room Accommodations

Price PP:	\$3,599.00 per person, Double Occupancy \$4,599.00 Single
Single or Double?	
One Bed or Two:	



**Friendly Excursions Inc.**  
P.O. Box 69, Sunland, CA. 91041  
Phone (818) 353-7726  
Fax (818) 353-3903  
E-mail: friendlyexc@yahoo.com

Personal checks are preferred please make check out to: **Friendly Excursions Inc.**

Payment by credit card (check one): ☐



☐



☐



Credit Card # \_\_\_\_\_ Expiration Date: \_\_\_\_\_

Amount to be charged \$ \_\_\_\_\_ Sec. Code: \_\_\_\_\_

Signature: \_\_\_\_\_ Today's Date: \_\_\_\_\_

**HEALTH ADVISORY:** To ensure the safety and well-being of all members, we strongly encourage everyone to take necessary precautions to protect themselves and others from COVID-19 and other diseases. This includes not traveling or coming to a meeting when you are ill; wearing masks, and following all guidelines and regulations set forth by the relevant authorities.

**TRAVEL ADVISORY:** Any member needing assistance on a trip (i.e. caretaker) must provide the name of that person to the travel coordinator and their trip cost is to be paid by either the member or the caretaker. If a wheelchair/walker will be needed, the member will provide that. Caretaker will fill out and sign liability and medical information page required to travel.

**WHEN CAN I SIGN UP FOR A TRIP?** The first time you can sign up for a trip *is either at a meeting or after a trip appears in the newsletter — WHICHEVER COMES FIRST. You can sign up in the Rover office, you can mail your check in or you can sign up at general meetings.* Keep in mind the trip can fill up at any of those times. When you write a check for a trip, make it payable to Rambling Rovers and please include your phone number on the check and also the name of the trip in the memo line. Re Rover trips and not those arranged by a travel company like Friendly Excursions: If you ever cancel a trip and get a refund, you must cash it within 90 days or it is voided. When are refunds made? If you cancel a trip in less than twenty (20) days but more than three (3) days before departure and are not replaced by someone else, the prepaid expenses will be deducted from the total cost of the trip and the balance refunded. If you cancel within three (3) days of departure, there will be NO refund UNLESS the member is replaced by someone else, OR a letter is presented from the member's physician within thirty (30) days of the trip's departure date, verifying member's medical reason for canceling, OR there is a death in the member's immediate family (a person's immediate family is their smallest family unit). Refunds for ALL circumstances may be reviewed by the Board, if requested by the member or by the trip coordinator on behalf of the member.

Tipping the driver: A gratuity for coach drivers is included in the total price of the trip (\$2 per person) but if you feel generous, you can give him/her more as you leave the bus at the end of the trip. When bringing luggage to be loaded under the bus, please color code it with the school colors for your city which are: Kennewick - black/orange ; Richland - green/gold.